



Requirements and Solutions

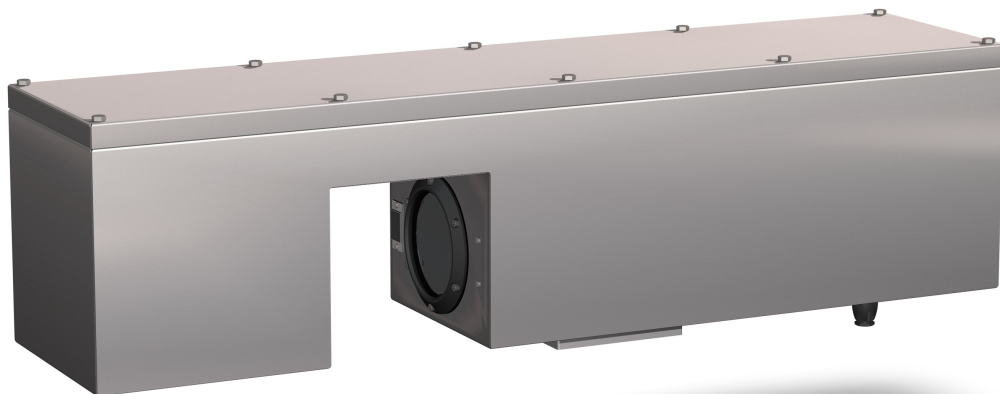
The quality of your products means a lot to us. Product leaking from containers with crooked caps should be detected and sorted out well in advance. Our Innocheck CCI crooked cap inspection is able to measure the crookedness of closures highly accurately to identify miscapped screw-cap PET bottles. The machine offers maximum quality assurance beginning with checking the presence of caps and tamper-evident seals up to and including checking cap heights.

Key Features

- Efficient crooked cap inspection with only one camera
- For 28 and 38-mm closures and sports bottle caps
- A special lens system takes very high contrast, extremely sharp and distortion-free images of the closures

Standard Equipment

- Hygienically designed stainless steel housing
- Manually adjustable stand
- Maintenance-free infrared photoflash lighting
- High resolution camera
- Telecentric lens system
- Innovative KHS image processing software





Advantages

- The maintenance-free LED lighting cuts the cost of maintenance and repairs
- The perfect primary image quality detect the slightest flaw
- Independent of extraneous light for maximum freedom from interference
- Compact machine design
- Future-safe thanks to the wide range of inspectable closure types



Options

- Automatic height adjustment

Possible Combinations

- Innocheck rejection system
- Innocheck FHC (fill level check)
- Innocheck TSI (tamper-evident seal inspection)
- Innocheck FMS (filler and capper management system)

Service

- Worldwide service
- Holistic consulting and planning
- ReDiS remote maintenance
- Fast supply of spare parts

Technical Data

Maximum machine capacity

72,000 containers per hour / 1,200 containers per minute

KHS GmbH

Juchostrasse 20
44143 Dortmund
Germany

Phone: +49 (0) 231/569-10117

Fax: +49 (0) 231/569-410117

E-mail: juergen.herrmann@khs.com

www.khs.com