



Requirements and Solutions

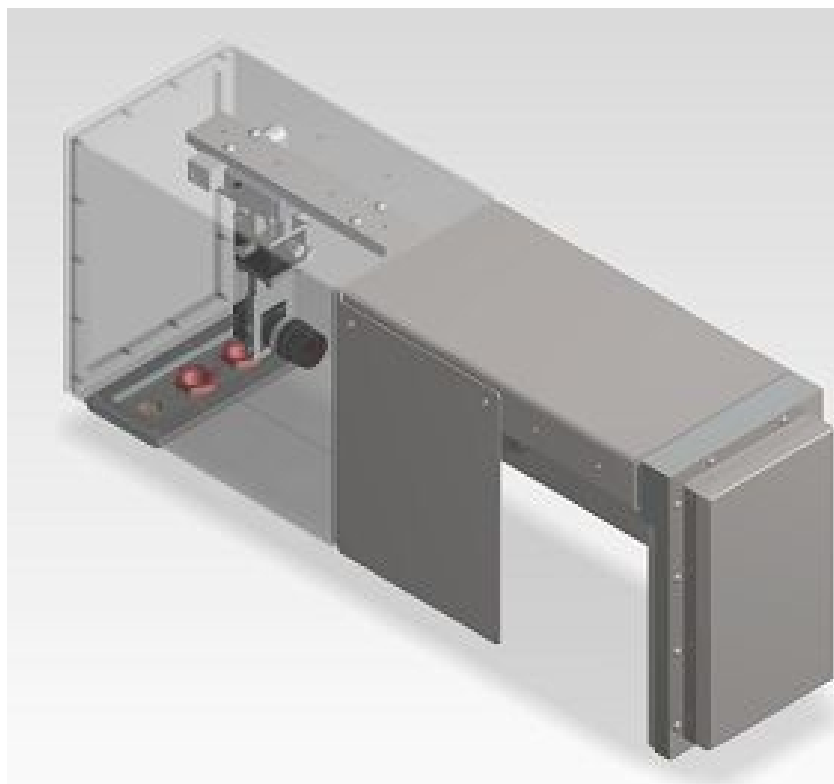
Philosophers continue to debate whether a glass is half-full or half-empty. You can avoid any discussion with lawmakers and keep your customers from turning into philosophers by implementing the KHS Innocheck series fill level check. Camera technology is one version available for selection from the FHC series. These measurement units operate with one LED light source enabling exact determination of the fill levels in the captured container images.

Key Features

- Optical measurement system
- Suitable for non-foaming or low-foaming products
- Suitable for glass and PET containers
- LED technology-based lighting
- Implementation in the high performance range possible
- Serves to maintain product safety regarding minimum legal amounts
- Not suitable for containers with foreign objects in the area of the fill level or the measuring area that could hinder the optical measurement system
- Use of Ethernet cameras
- Hygienic design

Standard Equipment

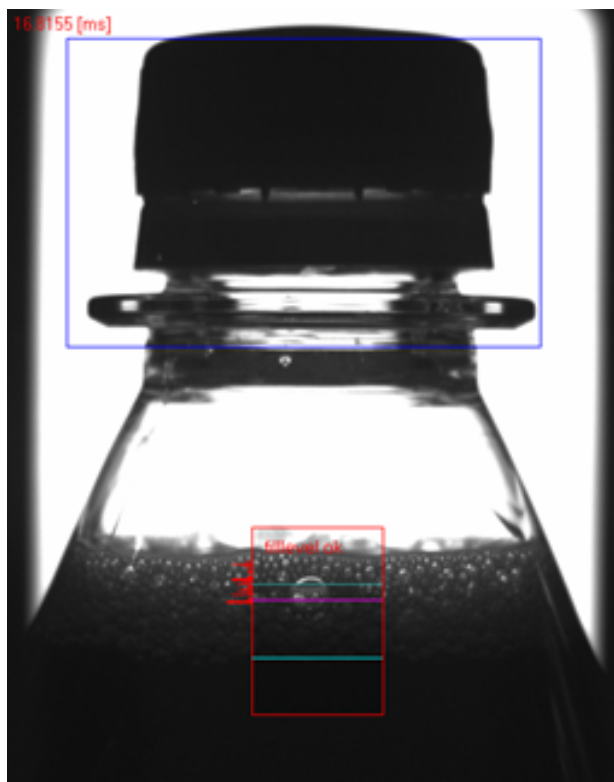
- Hygienically designed stainless steel housing
- Height-adjustable stand
- LED lighting
- Ethernet camera
- Innovative KHS image processing software





Advantages

- No special safety regulations or time-consuming registration procedures necessary to implement the measurement bridge
- High-precision measurement of fill levels
- High system reliability
- Overfill and underfill checking possible with one measuring unit



Possible Combinations

- Innocheck CCI (crooked cap inspection)
- Innocheck TSI (tamper-evident seal inspection, closure color, other options)
- Innocheck LBI (label presence inspection)
- Innocheck FMS (filler and capper management system)
- Closure presence

Service

- Worldwide service
- Holistic consulting and planning
- ReDiS remote maintenance
- Fast supply of spare parts

Technical Data

Maximum machine capacity

72,000 containers per hour / 1,200 containers per minute

Measuring tolerances (product-dependent)

+/- 1.5 mm

Protection class

IP 65

KHS GmbH

Juchostraße 20

D-44143 Dortmund

Phone: +49 (0) 231 / 5 69-10117

Fax: +49 (0) 231 / 5 69-410117

E-mail: juergen.herrmann@khs.com

www.khs.com

