



### Requirements and Solutions

We help you keep everything under control. The Innocheck LKI (empty crate inspection) quickly and reliably inspects your crates and empties in preparation for packing and palletizing. Illumination from below provides optimum contrast for checking crates for empty partitions, defective bottom supports, bottle remnants, and foreign objects.

### Key Features

- The empty crate inspection is suitable for linear crate formats as well as honeycomb partitions
- The light source is slanted to keep it from being soiled by falling debris
- Provides capabilities for inspecting packs with various partition layouts

### Standard Equipment

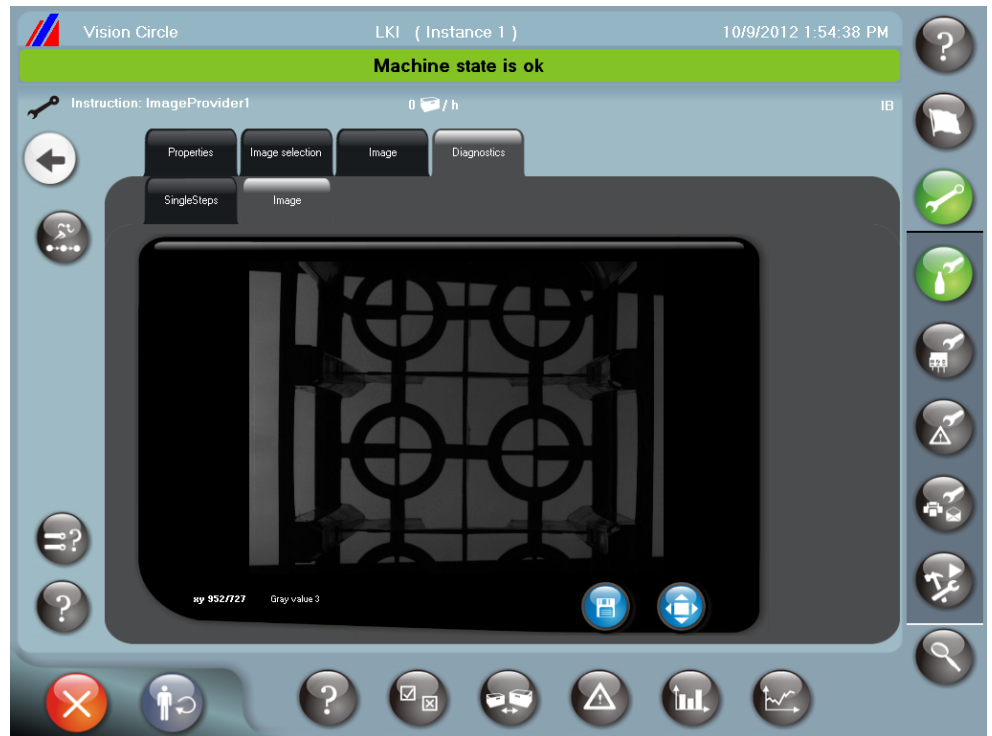
- Hygienically designed stainless steel housing
- Long-lasting and homogenous LED lighting
- High resolution camera
- Innovative KHS image processing software





### Advantages

- Increased line efficiency by eliminating crating problems
- Robust design ensures a long product life cycle
- Useable for all crate types
- Compact machine design for easy integration



#### Options

- Crate logo detection
- Extra lighting blowers

#### Possible Combinations

- Innocheck rejection system

#### Service

- Worldwide service
- Holistic consulting and planning
- ReDiS remote maintenance
- Fast supply of spare parts

#### Technical Data

##### Maximum machine capacity

6,000 crates per hour

##### Detection precision

KHS standard, otherwise after type testing

##### Protection class

IP 65

KHS GmbH

Juchostraße 20  
D-44143 Dortmund  
Phone: +49 (0) 231 / 5 69-10117  
Fax: +49 (0) 231 / 5 69-410117  
E-mail: juergen.herrmann@khs.com  
www.khs.com

